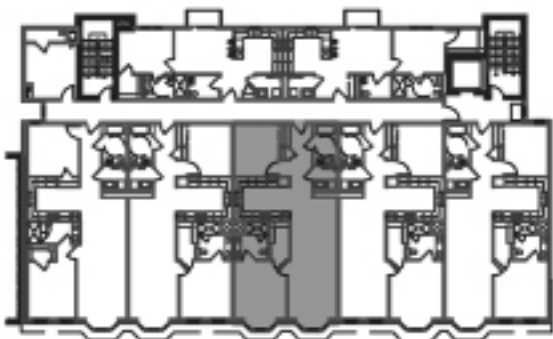


KEY PLAN: N.T.S.



FOURTH FLOOR

Unit #4C Scale 1/8" = 1'-0"

Unit Area:
1,143 SF

Nader Rezai - Sales Associate
 Jersey City Downtown Office: 201.333.4443 x200
 Email: nader@hudsongold.com / Cell: 201.736.5713

