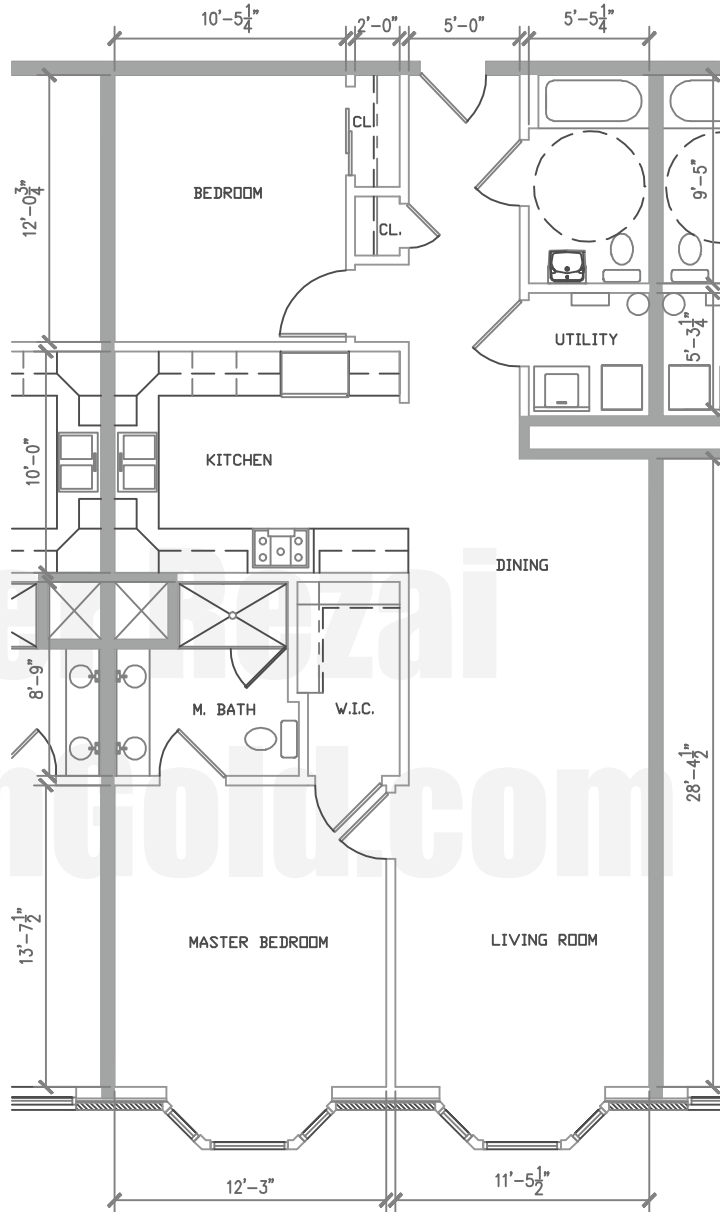


# THE GANNON

CONDOMINIUMS | JERSEY CITY, NJ



KEY PLAN: N.T.S.

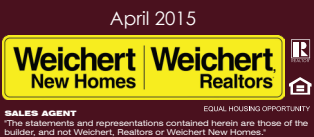


SECOND FLOOR

Unit #2C Scale 1/8" = 1'-0"

Unit Area:  
1,143 SF

Nader Rezai - Sales Associate  
 Jersey City Downtown Office: 201.333.4443 x200  
 Email: nader@hudsongold.com / Cell: 201.736.5713



Subject to government regulations, estimated measurements, prior sale, withdrawal, errors, omissions or change without notice. Information deemed reliable, but not guaranteed.  
 weichertnewhomes.com

