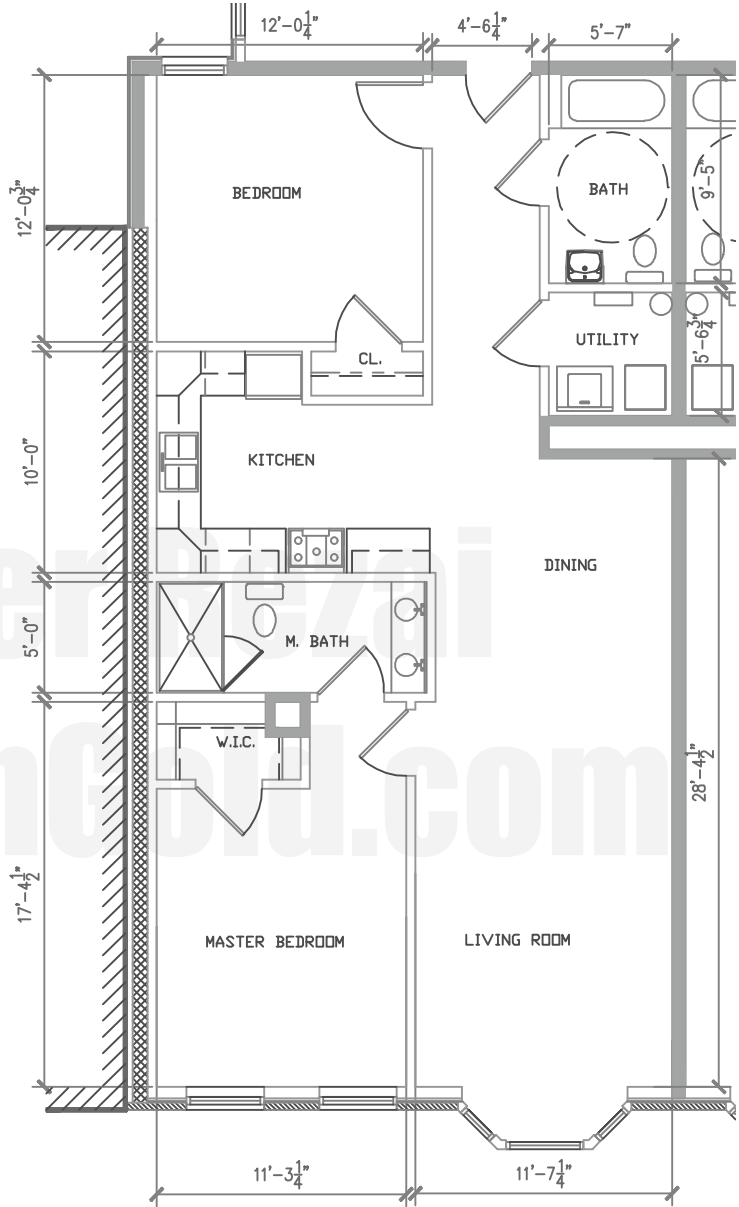
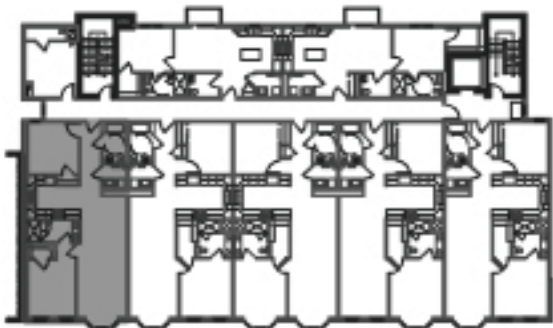


THE GANNON

CONDOMINIUMS | JERSEY CITY, NJ



KEY PLAN: N.T.S.



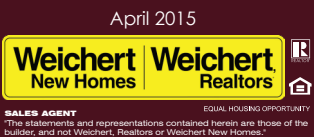
SECOND FLOOR

Unit #2A Scale 1/8" = 1'-0"
 Unit Area:
 1,102 SF

Nader Rezai - Sales Associate

Jersey City Downtown Office: 201.333.4443 x200

Email: nader@hudsongold.com / Cell: 201.736.5713



Subject to government regulations, estimated measurements, prior sale, withdrawal, errors, omissions or change without notice. Information deemed reliable, but not guaranteed.

weichertnewhomes.com

