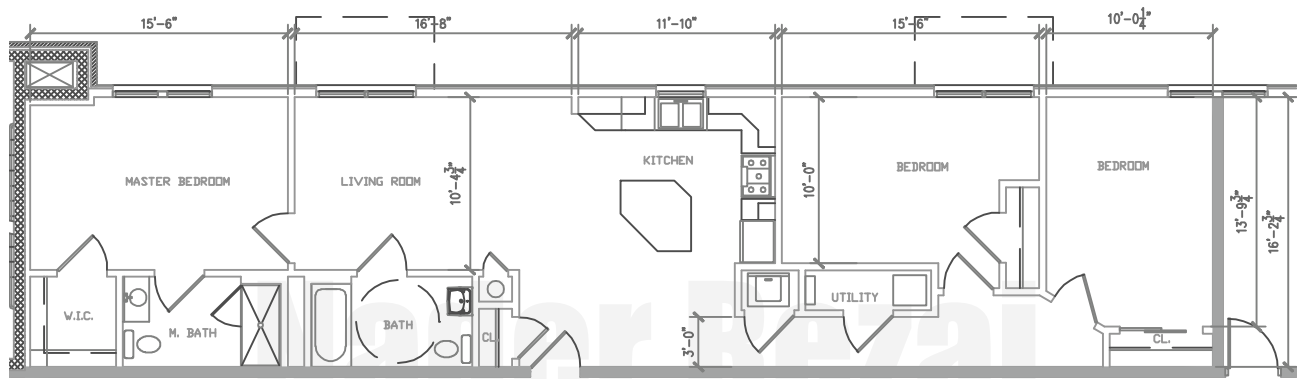


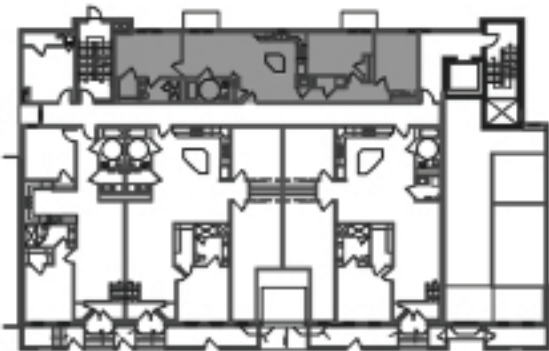
THE GANNON

CONDOMINIUMS | JERSEY CITY, NJ



Unit #1D Scale: $\frac{3}{32}'' = 1'-0''$
 Unit Area:
 1,359 SF

KEY PLAN: N.T.S.



FIRST FLOOR



Nader Rezai - Sales Associate
 Jersey City Downtown Office: 201.333.4443 x200
 Email: nader@hudsongold.com / Cell: 201.736.5713

April 2015

Weichert New Homes **Weichert Realtors**

SALES AGENT
 The statements and representations contained herein are those of the builder, and not Weichert, Realtors or Weichert New Homes.

Subject to government regulations, estimated measurements, prior sale, withdrawal, errors, omissions or change without notice. Information deemed reliable, but not guaranteed.
weichertnewhomes.com

